

NEW

# mjz Executive Living

High Quality residence on a short term lease

COMFORTABLE – CONVENIENT – PERSONALIZED



HIGH QUALITY RESIDENCE ON A SHORT TERM LEASE

NEW SUITES – NEW ROOM CONCEPT

Travelling the world.  
At home with us.



*Welcome to Executive Living!*

*We would like to introduce the new mjz Executive Living suites, lofts and penthouses.*

*During our short history, advances in technology have added significant benefits, such as W-Lan in each suite, active air control, elevator, extended satellite TV, safety doors and an environmentally friendly energy concept.*

*We have set new standards for the architecture, material choice, comfort and space concept as well as in the use of energy, data and communication technology.*

*Integrated to make our guests feel comfortable and at home.*

*Please take a look at our new suite layouts and details.*

*Yours,*

*Conny & Manfred Lenz*

**mjz Executive Living**

GmbH



High Quality residence on a short term lease

COMFORTABLE – CONVENIENT – PERSONALIZED



**We provide more.  
For »more« family too**



# Penthouses on the Executive Floor

Venezia · Firenze

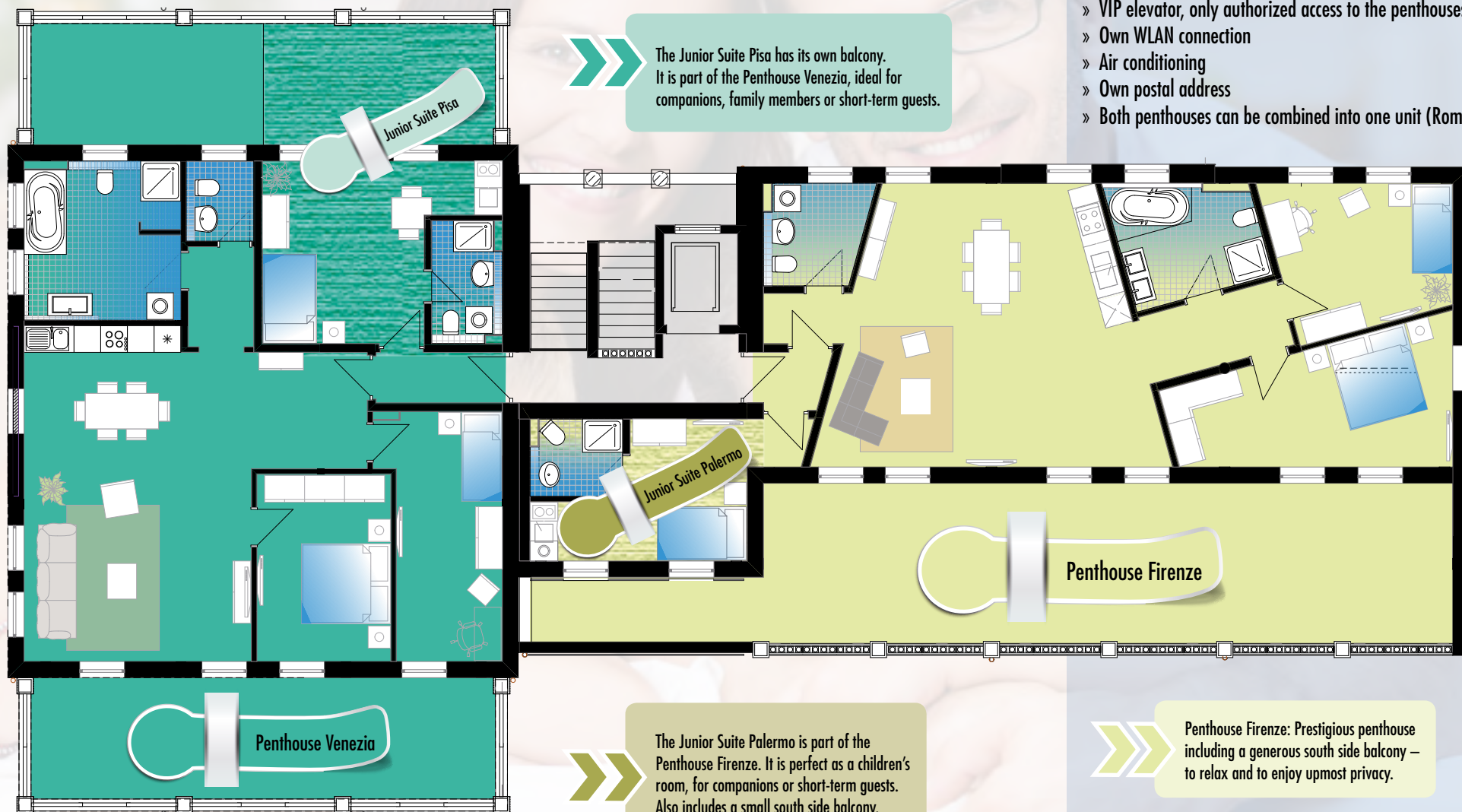
## Penthouse Venezia:

Prestigious and very presentable accommodation for discerning guests that like open spaces and relaxing on a spacious balcony.

The Junior Suite Pisa has its own balcony. It is part of the Penthouse Venezia, ideal for companions, family members or short-term guests.

## Penthouse Features:

- » Large penthouses
- » High ceilings
- » Very large balconies
- » Fully independent Junior suite is part of a penthouse, ideal for companions, family members or short-term guests
- » VIP elevator, only authorized access to the penthouses
- » Own WLAN connection
- » Air conditioning
- » Own postal address
- » Both penthouses can be combined into one unit (Roma)



South Side Balcony accessible from all bedrooms, exclusive room furnishings, high ceilings

The Junior Suite Palermo is part of the Penthouse Firenze. It is perfect as a children's room, for companions or short-term guests. Also includes a small south side balcony.

Penthouse Firenze: Prestigious penthouse including a generous south side balcony – to relax and to enjoy utmost privacy.



#### Suites Features:

- » All suites with balcony (upper floor) or patio with garden
- » Elevator to upper floor
- » Own WLAN connection
- » Air conditioning
- » Own postal address
- » Suites can be combined into one unit

## Suites

Ferrara · Napoli · Livorno · Pescara · Genova  
Bari · Como

Suite Ferrara

Suite Genova

Suite Como

Juniorsuite Bari

Suite Napoli

Suite Livorno

Junior-Suite Pescara

#### Suite Bergamo

The Ferrara, Napoli and Livorno can be combined into a 6 room suite when there is a need for increased capacity.

#### Como und Bari Suites:

Large patio with garden, perfect for relaxing, barbecues or somewhere for the children to play.

# Lofts

Torino · Parma · Milano

## Our Lofts:

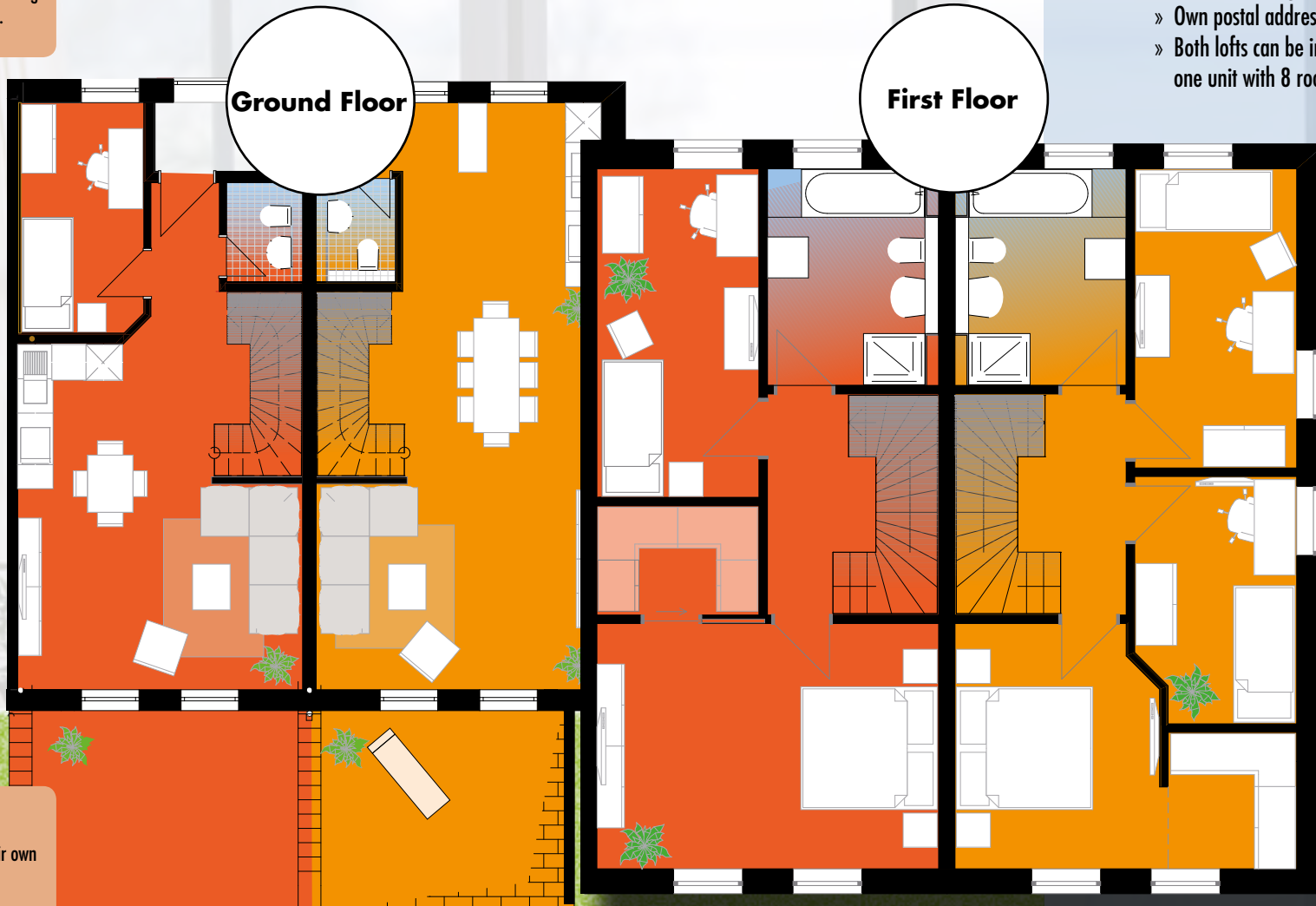
Attractive architecture, ideal for separating the living and working environments.

## Lofts features:

- » Spacious room layout
- » Attractive architecture
- » Own patio with garden
- » Own WLAN connection
- » Air conditioning
- » Own postal address
- » Both lofts can be integrated into one unit with 8 rooms (Loft Roma)

Ground Floor

First Floor



## Patio:

The lofts all have direct access to their own patios and garden.

Loft Parma

Loft Torino

## Loft Milano:

The Parma and Torino lofts can be integrated into an 8 room loft when there is a need for increased room capacity.



Style & Ambience



High standards



## Our Furnishings

Highest standards for all lofts and suites

### FEELING COMFORTABLE WITH STYLE

High quality and exclusive furnishings

Box spring beds

Stylish ambience in all rooms

All rooms have a balcony or patio

High security access standards

VIP elevator to the Executive Suites

Fully equipped kitchen

Own postal address

Modern office technology such as DSL, satellite TV

WLAN, every unit has its own IP address and Internet access

Many extra services can be arranged

Natural materials



Security



Modern bathrooms



Fully equipped kitchens







# Renewable Energy Concept

Our "Environment Promise"

## The Executive Living Energy Concept

Many companies wish to leave as green a "footprint" as possible. A new energy concept has been realized in the new building to allow for this which is not only energy-saving but also sustainable for targeted energy production and contributes to intermediate energy storage.

With our self-imposed "Environment Promise", we have set standards for an environmentally friendly and resource-saving building without limiting the comfort and demands desired by our customers.



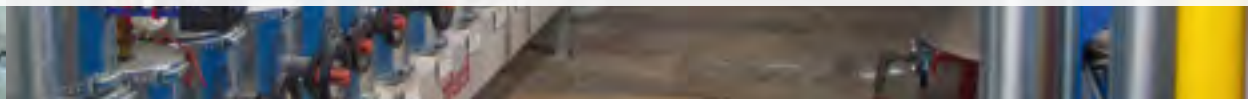
### Energy from hydroelectricity

Hydroelectricity forms part of the renewable or regenerative energy sources and is therefore an important constituent of the energy revolution!

The hydroelectricity station EW1 in Oberding is one of five power stations of the E-Werk Schweiger oHG. About 1700 average households can be provided with electricity on a resource-saving basis by these five power stations. Executive Living GmbH obtains ecological and environmentally friendly power from E-Werk Schweiger.

### Block heat and power plant »green energy production«

Our own block heat and power plant is a modular constructed facility to produce electrical energy and heat. Any unused power generated is for example temporarily stored in special batteries and not used until it is needed. A new photovoltaic facility has also been installed, where we can use, save and regulate solar energy intelligently with our "sun battery". Energy saving electrical equipment and LED lights ensure the highly efficient handling of valuable energy – as does the high quality heat insulation in the building and the automatic room ventilation.





# Our recommendations

## Partners · Places of Interest



### IMPERIAL JET

Fly in a private jet with your own crew. Independent, safe and reliable. Superbly maintained airplane fleet with highly trained personnel and the best pilots in the industry.

#### Contact:

Munich Airport Business Park

Lilienthalstraße 17a

D-85399 Hallbergmoos

Phone: +49 811 99 88 60

24/7: +961 3 009 645

Email: fly@imperial-jet.com

Contact person: Sarah Karima Latreche



### United Limousines

„Travel in style“ A first class limousine and chauffeur service that provides complete assistance for business trips or private journeys.

#### Contact:

Niederlassung München, Carl-Zeiss-Ring 17

D-85737 Ismaning

Phone: +49 89 2000 16 777

E-Mail: info-muc@united-limousines.com

Contact person: Christian Straub



### Il-Mistero

Restaurant with a first-class menu offering a wide choice of traditional as well as modern Italian dishes. Great value is placed on quality and fresh ingredients from regional family-run companies for the Speciality dishes. Exquisite wines and spirits round off the menu.

#### Contact:

Il-Mistero, Theresienstr. 59

D-85399 Hallbergmoos

Phone: +49 811 93574

E-Mail: sergio@il-mistero.de

Contact person: Sergio Tenuta



### Taxi Aichinger

Whether a limousine or taxibus up to 8 people – 7 well-kept and fully air-conditioned vehicles are available. All drivers are trained and have the best knowledge of the area.

#### Contact:

Tassiloweg 22a

D-85399 Hallbergmoos

Phone: +49 811 2818

Fax: +49 811 2819

Email: info@taxi-aichinger.de

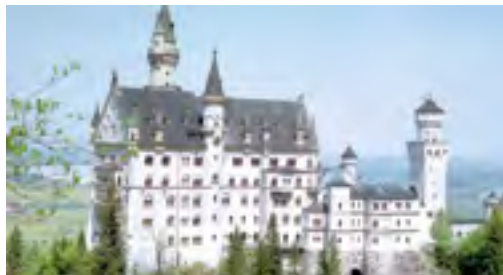
Contact person: Manoela Aichinger



### Therme Erding

One of the most popular water parks, with 20 slides, the biggest sauna in the world and an exotic thermal water paradise.

Info: [www.therme-erding.de](http://www.therme-erding.de)



### Neuschwanstein Castle

Neuschwanstein Castle is situated in Allgäu above Hohenschwangau near Füssen on a craggy mountain. It is the most famous castle of King Ludwig II and one of the most well-known sights in Germany.

Info: [www.neuschwanstein.de](http://www.neuschwanstein.de)



### Marienplatz in Munich

Experience The Glockenspiel which consists of 43 bells and 32 life-sized figures and chimes up to 3 times per day. During the Advent season there is a traditional Christmas Market here.

Info: [www.marienplatz.de](http://www.marienplatz.de)



### Königssee

The Königssee is an elongated mountain lake embedded between steep mountain sides. With its unique landscape it is known to be one of the cleanest lakes in Germany for its water quality.

Info: [www.koenigssee.com](http://www.koenigssee.com)

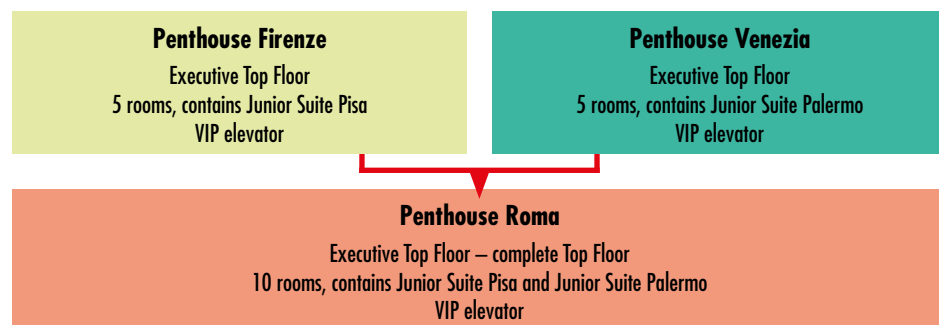


## The new room concept

### Combinations for increased room requirements

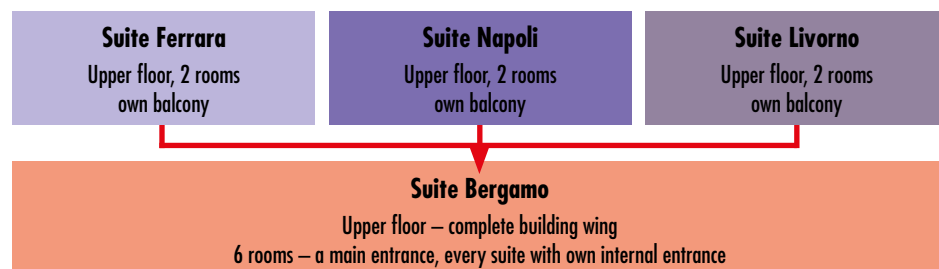
#### Penthouse combination possibilities

For a maximum room requirement or the desire for absolute privacy the penthouses can be combined to take over the whole upper level. The VIP elevator can be used exclusively by those renting the penthouse.



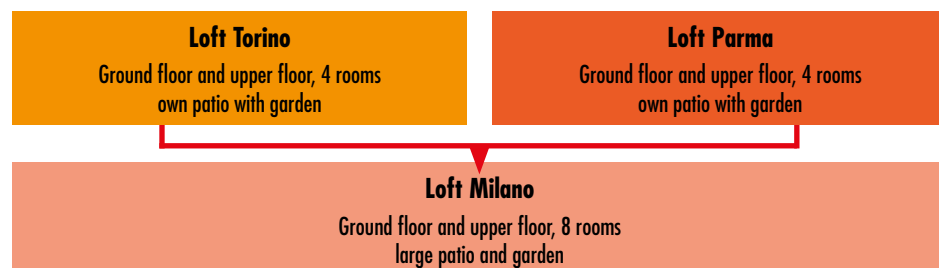
#### Suite combination possibilities

Those travelling with a large entourage or bringing their families may need many separate rooms. Our single suites Ferrara, Napoli and Livorno can be perfectly combined into one unit.



#### Loft combination possibilities.

Exclusive living and working in both lofts.



*„Living and working in Hallbergmoos is perfect for me.  
There are excellent traffic connections to the motorway and the airport,  
and you still live in an absolutely quiet and great area.  
Conny and Manfred Zenz's lofts and suites are always like „coming home“  
for me.“*

Ralf Kleverbeck  
Siemens AG  
Siemens Deutschland  
Kaufm. Leiter Deutschland Vertrieb  
Machine Builder Systems  
Factory Automation and Control Products





High Quality residence on a short term lease  
COMFORTABLE – CONVENIENT – PERSONALIZED

THERESIENSTR. 37A  
D-85399 HALLBERGMOOS (MUNICH AIRPORT)  
PHONE: +49 - 811 - 99976-0  
FAX: +49 - 811 - 99976-77

VIPREQUEST@MJZ.DE  
WWW.MJZ.DE

HIGH QUALITY RESIDENCE ON A SHORT TERM LEASE

NEW SUITES – NEW ROOM CONCEPT